

June 20, 2013

TO: Nicholas Agbobu
Engineering, Budget, and Office Operations

FROM: Robert Swartz
Field Operations



**CONSOLIDATED SEWER MAINTENANCE DISTRICT
CONDITION ASSESSMENT PROGRAM REPORT
PROJECT Y0TV0708E**

This memo is to inform you that as part of the Sewer Condition Assessment Program, the County of Los Angeles Department of Public Works Consolidated Sewer Maintenance District has completed the closed-circuit television (CCTV) inspection of 2,354 feet or approximately 0.1 percent of the sewer system within Unincorporated County maintained by the District's East Yard.

The attached report outlines the structural and maintenance ratings of your system based on the Pipeline Assessment and Certification Program's rating methodology. Included in the report are the following:

- Condition Assessment Report
- Project Overview Map (Enclosure 1)
- Quick Maintenance Rating Map (Enclosure 2)
- Quick Structural Rating Map (Enclosure 3)
- CCTV Sewer Inspection Project Schedule (Enclosure 4)

The Condition Assessment Report will provide details regarding the maintenance and structural condition of our sewer mainlines. This information can be included in our agency's Sewer System Management Plan as a reference in Chapter 8.0, System Evaluation and Capacity Assurance Plan. The segments with critical maintenance issues have been cleaned and, in some instances, have been incorporated into our routine cleaning schedule for continued monitoring. In addition, the segments with severe structural defects have either been repaired or will be scheduled for repair as part of the ongoing Accumulative Capital Outlay Project.

EL:

Attach.

bc: RS, FV, File (Y0TV0708E)

**CONDITION ASSESSMENT REPORT
COUNTY OF LOS ANGELES DEPARTMENT OF PUBLIC WORKS
CONSOLIDATED SEWER MAINTENANCE DISTRICT**

PROJECT NAME:	Y0TV0708E	PROJECT MGR:	Kari Eskridge
PROJECT DATE:	05/12/08-07/28/08	CONTACT NO:	(626) 300-3390
SUP. DISTRICT(s):	1 & 5	MAP PAGE(S):	2020 & 2018
Report By:	Eric Liu	Report Date:	05/20/13

INTRODUCTION

As part of the Sewer Condition Assessment Program, the County of Los Angeles Department of Public Works Consolidated Sewer Maintenance District has completed the closed-circuit television (CCTV) inspection of 2,354 feet or approximately 0.1 percent of the Unincorporated Los Angeles County sewer system maintained by the District's East Yard.

The Sewer Condition Assessment Program utilizes the Pipeline Assessment and Certification Program (PACP Version 6.0.1) Quick Rating methodology to rank the structural and maintenance condition of your system based on industry standards.

PROJECT AREA AND DESCRIPTION

Project Y0TV0708E included sewer lines located in the Unincorporated County of Los Angeles area and in the City of Rosemead. Enclosed for your reference is an overview map of the project area (Enclosure 1).

DEFECT GRADE DESCRIPTION

The Quick Rating indicates the number of occurrences for the highest severity grade for each pipe segment for either maintenance or structural defects. A grade of 1 indicates that a pipe segment is in excellent condition with minor defects, while a grade of 5 indicates that a pipe segment may require immediate attention. A detailed breakdown of the five possible defect grades is as follows:

Grade	Defect Grade Description
1:	MINOR
2:	MINOR TO MODERATE
3:	MODERATE
4:	SIGNIFICANT
5:	MOST SIGNIFICANT

MAINTENANCE REPORT

Our inspection revealed that 100 percent of the inspected pipe segments within the Unincorporated County of Los Angeles were free of blockages or restrictions that would impede sewer flows. A color-coded map showing the Quick Maintenance Rating for each pipe segment is provided in Enclosure 2.

QUICK MAINTENANCE RATING TABLE

DEFECT GRADE	PIPE LENGTH (FT)	PERCENT TOTAL INSPECTED PIPE LENGTH	NO. SEGMENTS
1: Minor	0	0.0	0
2: Minor to Moderate	2,354	100.0	9
3: Moderate	0	0.0	0
4: Significant	0	0.0	0
5: Most Significant	0	0.0	0
TOTAL	2,354	100.0	9

High Water Levels

Our inspection revealed that high water level was not detected in any pipe segment in the County's sewers.

Infiltration

Our inspection revealed that infiltration was not detected in any pipe segment in the County's sewers.

STRUCTURAL REPORT

Our inspection revealed that 100 percent of the inspected pipe segments within the Unincorporated County of Los Angeles were free of severe structural defects. A color-coded map showing the Quick Structural Rating for each pipe segment is provided in Enclosure 3.

QUICK STRUCTURAL RATING TABLE

DEFECT GRADE	PIPE LENGTH (FT)	PERCENT TOTAL INSPECTED PIPE LENGTH	NO. SEGMENTS
1: Minor	2,098	89.1	8
2: Minor to Moderate	0	0.0	0
3: Moderate	256	10.9	1
4: Significant	0	0.0	0
5: Most Significant	0	0.0	0
TOTAL	2,354	100.0	9

FUTURE PROJECTS

The Sewer Condition Assessment Program will be performing future closed-circuit television (CCTV) inspection of the remaining sewer lines within Unincorporated Los Angeles County maintained by the East Yard. For your reference, the CCTV Sewer Inspection project schedule is listed in Enclosure 4.

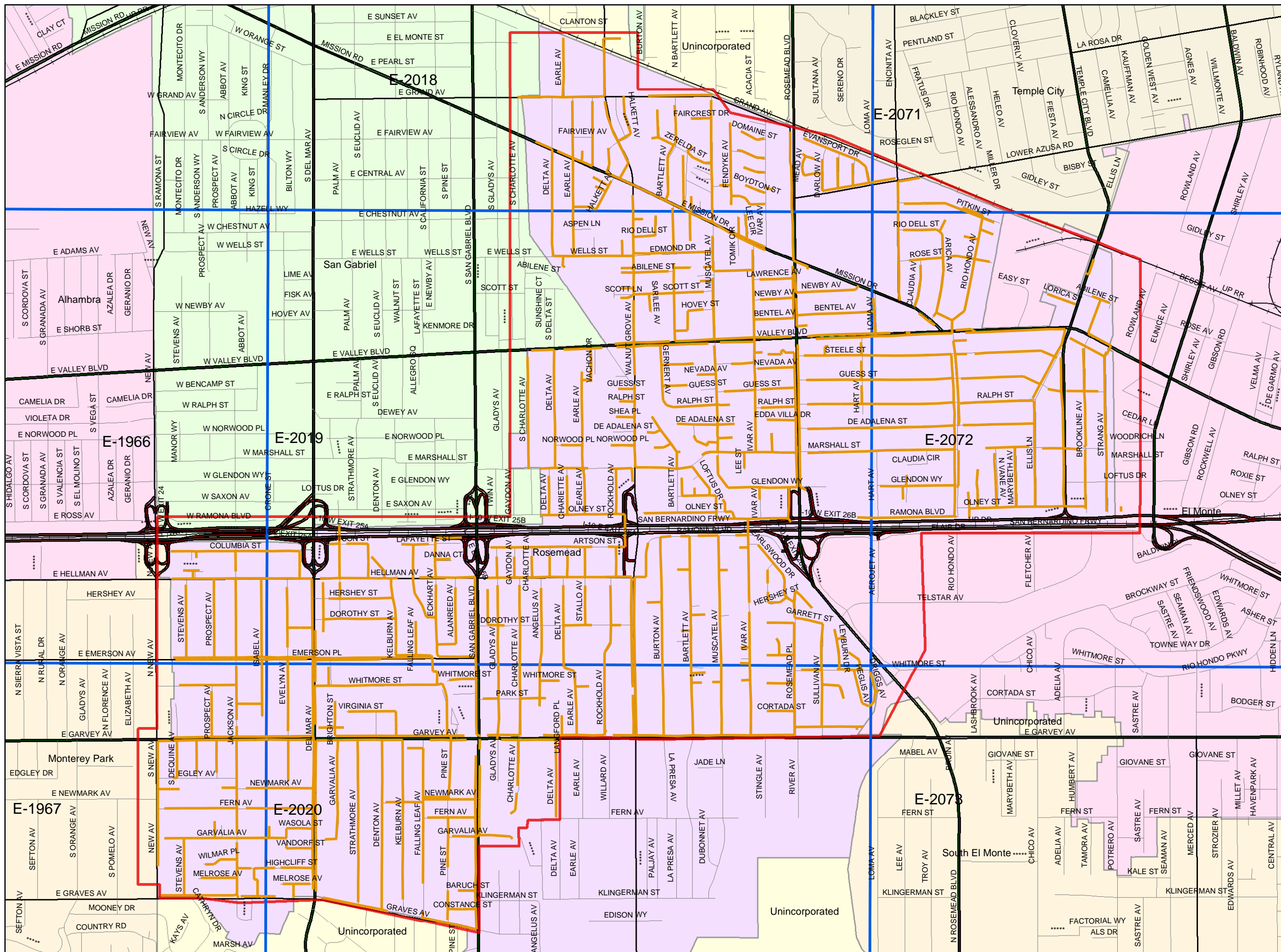
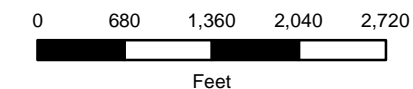
ENCLOSURE 1:

Project Overview Map

OVERVIEW MAP

CCTV PROJECT YOTV0708E

PROJECT AREA



Legend

— SMD Sanitary Sewers

SMD Manholes

⊙ Other

Manhole Type

● Standard

▲ DROP

■ Shallow

◇ Trap

⊗ Siphon

Ⓟ SMD Pump Stations

Ⓜ SMD Treatment Plants

Maintained by Others:

— Trunk Sewerlines

- - - Non SMD Sanitary Sewers

● Non SMD Maintained MH

□ SMD Operations Maps

▭ CCTV PROJECT AREA

This map is intended only for internal operations of the Los Angeles County Sewer Maintenance Districts. Los Angeles County expressly disclaims any liability for any inaccuracies which may be present in this map. Data contained in this map is produced in whole or part from the Thomas Bros. Maps® digital database. This map is copyrighted, and reproduced with permission granted, by Thomas Bros. Maps®. All rights reserved.

APRIL 2013

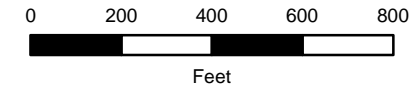
ENCLOSURE 2:

- Quick Maintenance Rating Map

ENCLOSURE 2

CCTV PROJECT YOTV0708E COUNTY UNINCORPORATED

QUICK MAINTENANCE RATING (QMR)



Legend

SMD Sanitary Sewers

- QMR**
- 1: MINOR
 - 2: MINOR TO MODERATE
 - 3: MODERATE
 - 4: SIGNIFICANT
 - 5: MOST SIGNIFICANT

SMD Manholes

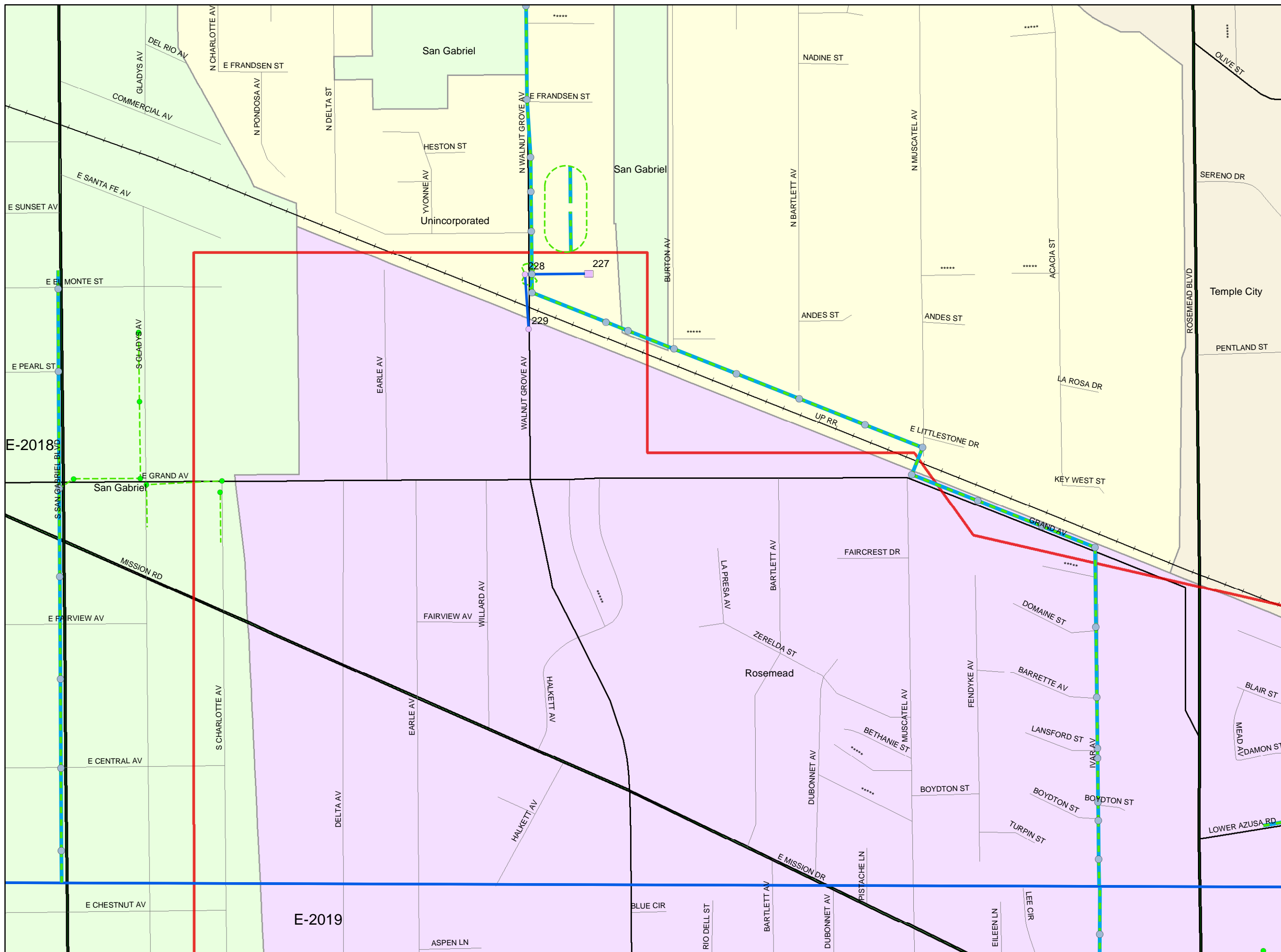
- Other
- Standard
- DROP
- Shallow
- Trap
- Siphon
- SMD Pump Stations
- SMD Treatment Plants

Maintained by Others:

- Trunk Sewerlines
- Non SMD Sanitary Sewers
- Non SMD Maintained MH
- SMD Operations Maps
- CCTV PROJECT AREA

This map is intended only for internal operations of the Los Angeles County Sewer Maintenance Districts. Los Angeles County expressly disclaims any liability for any inaccuracies which may be present in this map. Data contained in this map is produced in whole or part from the Thomas Bros. Maps® digital database. This map is copyrighted, and reproduced with permission granted, by Thomas Bros. Maps®. All rights reserved.

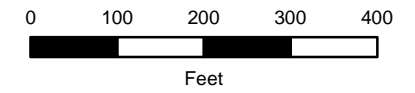
MAY 2013



ENCLOSURE 2

CCTV PROJECT YOTV0708E COUNTY UNINCORPORATED

QUICK MAINTENANCE RATING (QMR)



Legend

SMD Sanitary Sewers

- QMR**
- 1: MINOR
 - 2: MINOR TO MODERATE
 - 3: MODERATE
 - 4: SIGNIFICANT
 - 5: MOST SIGNIFICANT

SMD Manholes

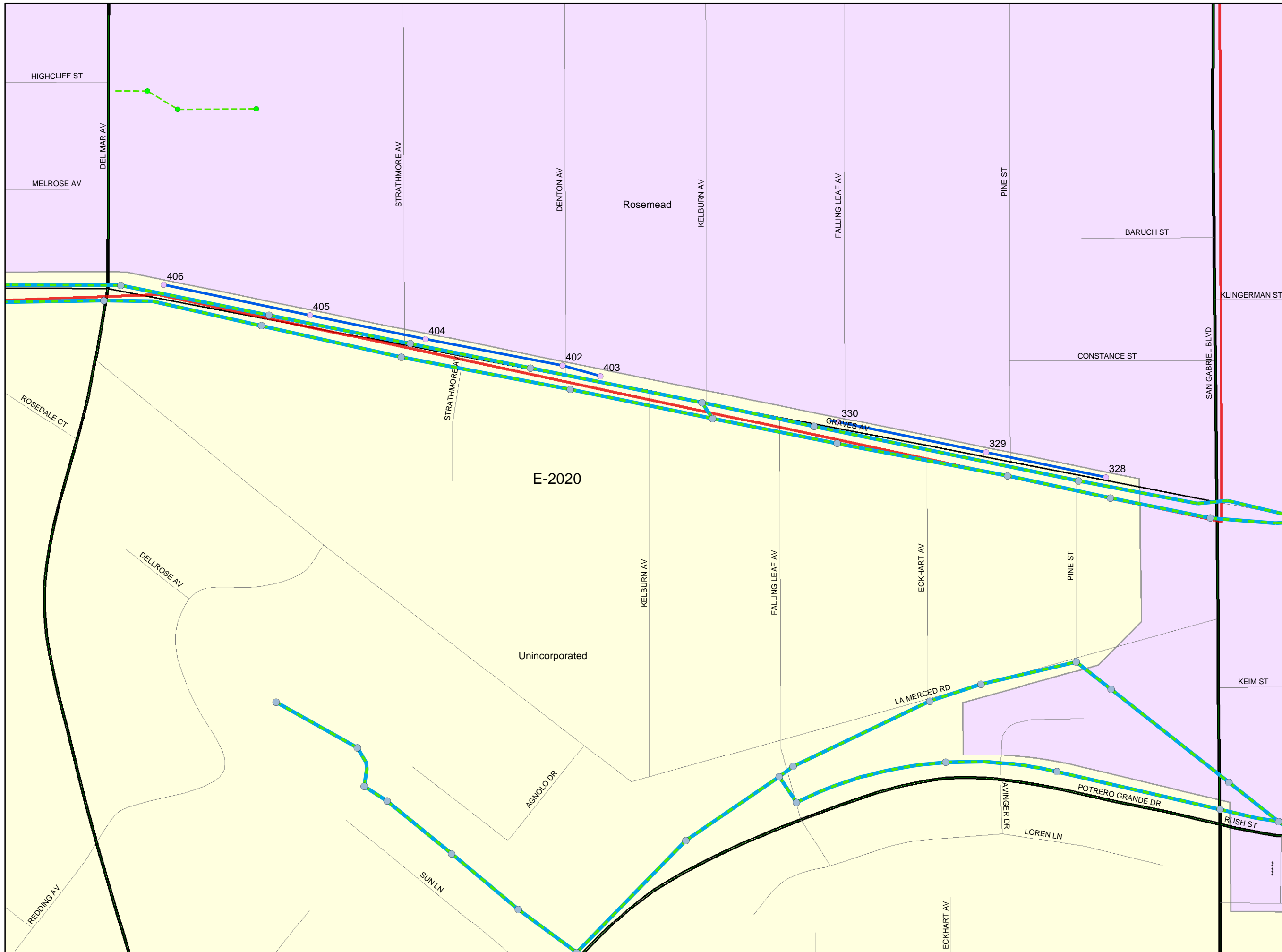
- Other
- Standard
- DROP
- Shallow
- Trap
- Siphon
- SMD Pump Stations
- SMD Treatment Plants

Maintained by Others:

- Trunk Sewerlines
- Non SMD Sanitary Sewers
- Non SMD Maintained MH
- SMD Operations Maps
- CCTV PROJECT AREA

This map is intended only for internal operations of the Los Angeles County Sewer Maintenance Districts. Los Angeles County expressly disclaims any liability for any inaccuracies which may be present in this map. Data contained in this map is produced in whole or part from the Thomas Bros. Maps® digital database. This map is copyrighted, and reproduced with permission granted, by Thomas Bros. Maps®. All rights reserved.

MAY 2013



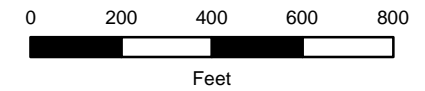
ENCLOSURE 3:

- Quick Structural Rating Map

ENCLOSURE 3

CCTV PROJECT YOTV0708E COUNTY UNINCORPORATED

QUICK STRUCTURAL RATING (QSR)



Legend

SMD Sanitary Sewers

- QSR**
- 1: MINOR
 - 2: MINOR TO MODERATE
 - 3: MODERATE
 - 4: SIGNIFICANT
 - 5: MOST SIGNIFICANT

SMD Manholes

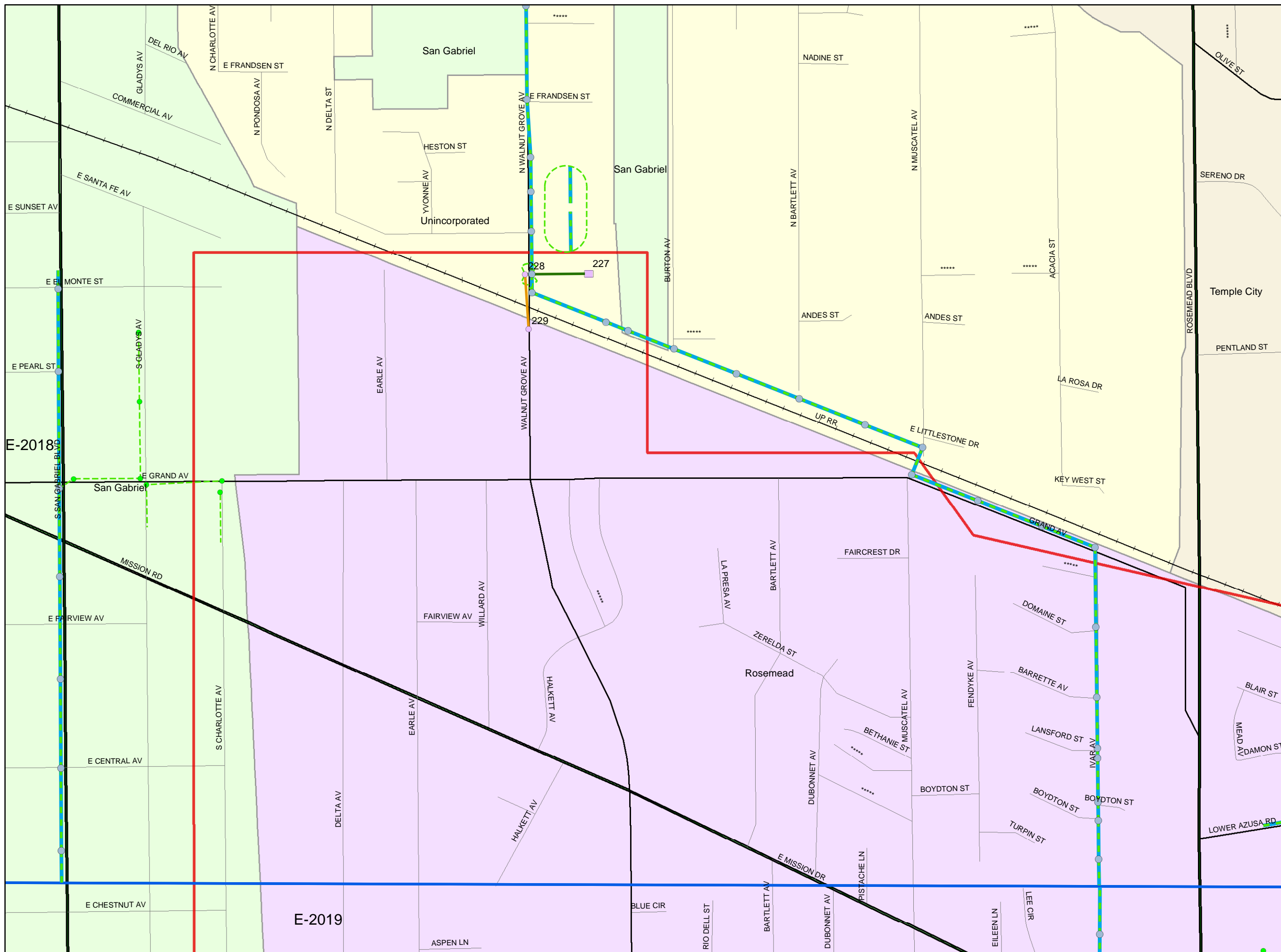
- Other
- Standard
- DROP
- Shallow
- Trap
- Siphon
- SMD Pump Stations
- SMD Treatment Plants

Maintained by Others:

- Trunk Sewerlines
- Non SMD Sanitary Sewers
- Non SMD Maintained MH
- SMD Operations Maps
- CCTV PROJECT AREA

This map is intended only for internal operations of the Los Angeles County Sewer Maintenance Districts. Los Angeles County expressly disclaims any liability for any inaccuracies which may be present in this map. Data contained in this map is produced in whole or part from the Thomas Bros. Maps® digital database. This map is copyrighted, and reproduced with permission granted, by Thomas Bros. Maps®. All rights reserved.

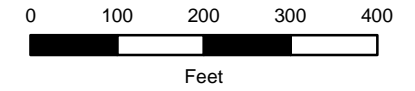
MAY 2013



ENCLOSURE 3

CCTV PROJECT YOTV0708E COUNTY UNINCORPORATED

QUICK STRUCTURAL RATING (QSR)



Legend

SMD Sanitary Sewers

- QSR**
- 1: MINOR
 - 2: MINOR TO MODERATE
 - 3: MODERATE
 - 4: SIGNIFICANT
 - 5: MOST SIGNIFICANT

SMD Manholes

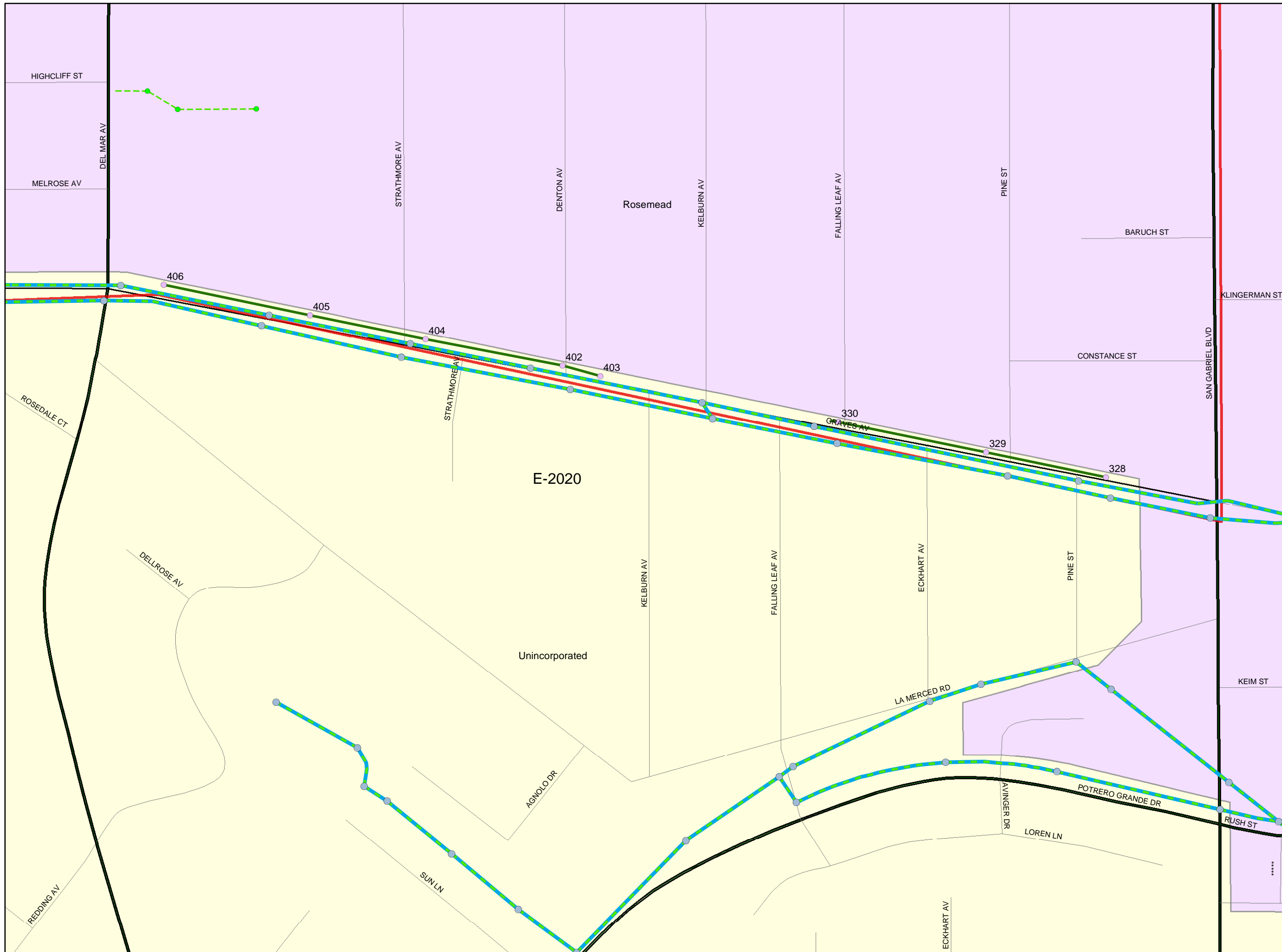
- Other
- Standard
- DROP
- Shallow
- Trap
- Siphon
- SMD Pump Stations
- SMD Treatment Plants

Maintained by Others:

- Trunk Sewerlines
- Non SMD Sanitary Sewers
- Non SMD Maintained MH
- SMD Operations Maps
- CCTV PROJECT AREA

This map is intended only for internal operations of the Los Angeles County Sewer Maintenance Districts. Los Angeles County expressly disclaims any liability for any inaccuracies which may be present in this map. Data contained in this map is produced in whole or part from the Thomas Bros. Maps® digital database. This map is copyrighted, and reproduced with permission granted, by Thomas Bros. Maps®. All rights reserved.

MAY 2013



ENCLOSURE 4:

CCTV Sewer Inspection Project Schedule

CCTV PROJECT SCHEDULE

Unincorporated East Yard

FISCAL YEAR	PROJECT NAME	LENGTH (FT)	STATUS
2005-2006	Y0TV0506D	49,010	COMPLETED
2005-2006	Y0TV0506E	159,581	COMPLETED
2007-2008	Y0TV0708F	195,437	COMPLETED
2007-2008	Y0TV0708E	2,354	COMPLETED
2008-2009	Y0TV0809A	213,884	COMPLETED
2008-2009	Y0TV0809C	301,513	REPORT IN PROGRESS
2009-2010	Y0TV0910B	1,675	COMPLETED
2009-2010	Y0TV0910C	224,433	REPORT IN PROGRESS
2010-2011	Y0TV1011A	502,737	REPORT IN PROGRESS
2011-2012	Y0TV1112B	767,924	REPORT IN PROGRESS
2013-2014	Y0TV1314B	617,047	FUTURE
2014-2015	Y0TV1415B	596,037	FUTURE
	TOTAL (FT):	3,631,632	
	TOTAL (MILES):	688	